



WHITE PAPER

2024

INNOVATIVE TECHNOLOGY SOLUTIONS YOU CAN TRUST

Table of Contents

| | | |
|----------------|-------|----|
| ➤ Introduction | | 1 |
| ➤ Our Company | | 2 |
| ➤ Our Services | | 3 |
| ➤ Our Delivery | | 7 |
| ➤ Our Team | | 9 |
| ➤ Our Clients | | 12 |
| ➤ Our Contact | | 14 |



Introduction



Globally, the use of Fiber Optic communication, the future of data communication, is becoming more and more a prerequisite due to increasing consumer and commercial demand for telecommunications capacity and interest services.

The Fiber Optic Industry recognizes this need and is moving critically to provide for faster data rates, advanced switching techniques and more intelligent network architecture that adapts reliably in response to traffic patterns while being cost effective.

Governments globally but specifically in the United States, Canada, Latin America and the Caribbean are recognizing that fast internet

infrastructure is one of the prerequisites to economic prosperity as Fiber Optic technology is easy to maintain, can provide longer life span, high information capacity, high reliability and low interference.

The Fiber Optic Market is projected to reach USD 14.90 Billion by 2030 at a compounded annual growth rate of 6.9% from 2023 - 2030.

\$14.9 **>>>** **2030** **>>>** **6.9%**

Billion USD

from 2023 - 2030

FTTX is strategically poised for these opportunities which will continue to arise from this dynamic and growing industry with its services and offerings, experience, expertise, cost effective FTTX network designs, and innovative solutions which will all rebound to the benefit of its customers.

Our Company



About Us

FTTXX Designs LLC, registered in October 2017, is a Fiber Optic Network Design Company offering Fiber Optic Network Design and Consultancy Services, As-Built Documentation and Registration, and GIS Consultancy Services and Training Solutions.

With over 50 years of collective experience in the telecommunication industry of its key human resources, FTTXX's focus is to transform the Fiber Optic infrastructural landscape for our customers with innovative, cost effective network designs that will create competitive advantage but will also provide telecom users the speed and efficiency they seek.

Mission

FTTXX seeks to empower our customers and improve business workflows and processes, by leveraging their current technology and knowledge capital.

Vision

This model involves a process of seamless integration of geographic technology with their current infrastructure that ensures a transition to informed, efficient and effective decision making.

Our Services

➤ As-Built Documentation

The collection, documentation, and management of as-built (red-line) drawings and survey details, as submitted by a contractor before, during or after the completion of a project. These include any changes made during the implementation of the project.



FTTXX Designs will provide:

- Detailed drawings with road names, pole #'s/manhole IDs, span distances; pole heights (optional), position of cables on the poles (optional);
- A colored, distinct representation which distinguishes each cable by network, the HE to which it is homed and fiber count;
- Riser locations;
- Storage locations (good for troubleshooting)
- Splice enclosure locations.

** Add-on feature*

High risk/hazardous locations (e.g. low hanging wires, trimming of trees required, etc.); poor/alternative span route suggestions (e.g. road crossings at inappropriate locations).

➤ Trunk Drawings

Detailed drawings showing the routes the existing trunk/primary fiber cables take with distances, points of origin, and splice locations.

Our Services

➤ Splice Documentation

The collection, documentation, and management of fiber splicing details, as submitted by a contractor.

FTTXX will provide:

- Detailed audits of each splice enclosure in selected area between specified locations (recommend between Head Ends);
- Indication of fiber activity for each fiber strand;

Basic Package

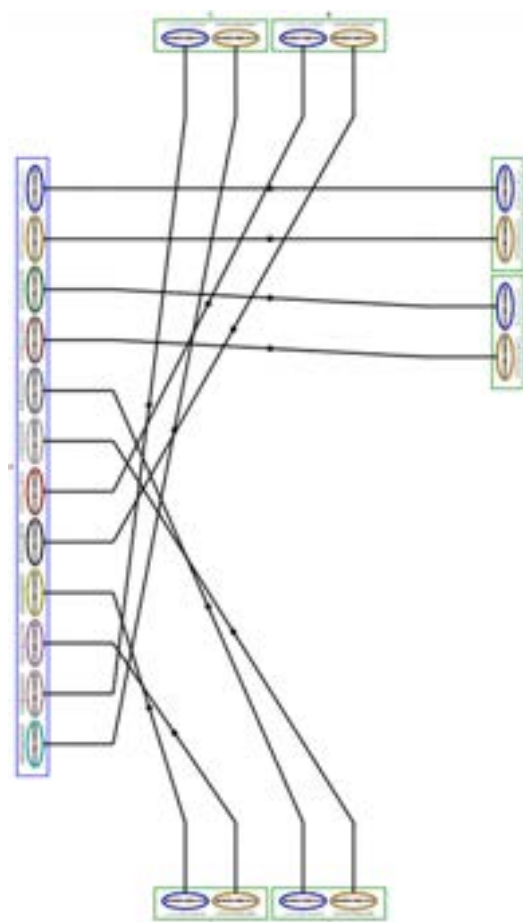
Light or No Light tests;

Special Package

Basic + Indication of Head End Home of fiber;

Deluxe Package

Special + Indication of which specific service is being delivered over the fiber in question.



Our Services

➤ Terminal Audits

The collection, documentation, and management of fiber splicing details in a Terminal/FSA.

FTTXX will provide:

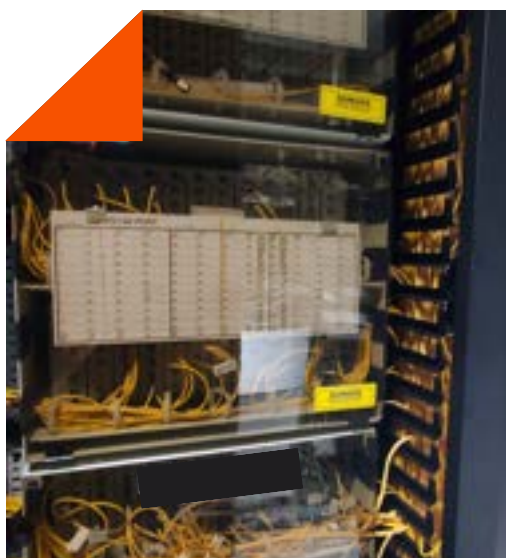
- A breakdown of the status of each distribution terminal in an FSA: showing which customers on each terminal port, FSA name and Headend Home;
- Distinct Identification of full terminals .

Additional Service

ODF information for terminal.



➤ Head End Audits



- Show service being delivered from each device port;
- Show final destination of each fiber leaving the Head End – Customer Name/Number;
- OTDR distance for each fiber leaving Head End.

Our Services

GIS Analysis

Accurate and current analysis of network penetration with geographical, graphical and statistical representation/comparison of the client's customer base vs their competition's.

Customer Services Analysis (Deluxe Package) includes Data showing the exact services subscribed by each customer. With this information the client has the ability to execute detailed, specific target sales and can pitch with the knowledge of exactly which products the competition is supplying.



The client can use the analysis to target low penetration areas for ad campaigns or promotions and further to this, via the Customer Services Analysis, can run specific promotions according to the data for specific areas.

For e.g. Push a Video Services promotion in an area and have a separate Broadband promotion in another area, according to what is needed.

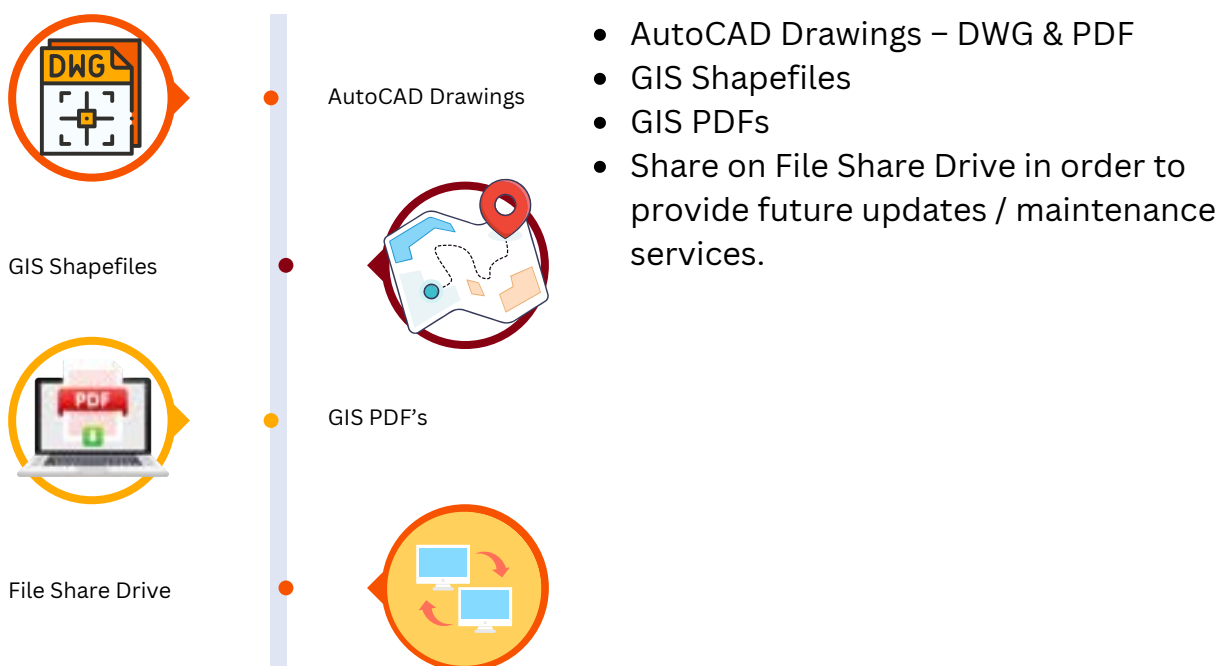
Analysis of Branding Visibility and AD Presence

This is a service that can be offered across various business sectors (Banks, Beverage companies, etc.). This includes:

- Highlighting graphically on a map areas where the client's branding is located;
- Do the same for the client's competition;
- Highlight available existing and/or potential ad locations.

Our Delivery

➤ As-Built Drawings



➤ Splice Documentation

- Excel spreadsheet
- Google Doc spreadsheet – Possibility of remote maintenance & updates

Sorted according to FSA, Head End, Network, Parish, UG/ Aerial

➤ Head End Audits

- Excel spreadsheets
- Google Doc spreadsheets
- Photographs
- Reports

Our Delivery

➤ GIS Analysis



Shapefiles

PDF's of Shapefiles



Reports



Photographs



ArcGIS Dashboards

➤ Expertise in the following Applications

- Auto CAD
- Esri Software and Mobile Apps
- Micro Station
- ArcFM and DHFC
- Lode Data Products
- CrescentLink
- OSP Insight

➤ Additional Services

Efforts to improve your network with our suite of services:

- Fiber Optic Network Design and Consultancy
- As-Built Documentation and Registration
- GIS Training Solutions and Consultancy

We are confident that we can meet the challenges ahead, and stand ready to partner with you in delivering an effective telecom/fiber solution.

Our Team

Our CEO

Brings over 25 years of Engineering, Telecommunications, Human Resources and Management knowledge and skilled experience to FTTXX from the Broadband and Telecommunication Industry in North America and the Caribbean.

His qualifications, which include a Master in Business Administration (MBA) specializing in Technology Management, Bachelor of Science in Management, (BSM), key certifications including Project Management Professional and Fiber to the Home Professional (Light Brigade) among others have propelled his outstanding career making him one of the most sought-after professionals in the industry.

Specialized experience in Telecommunications, Corporate and OSP Fiber Optic engineering projects, his ability to lead small and large engineering teams, specialist's skills in subcontractor and stakeholder management and training in strategic management, organizational behavior and critical thinking has equipped him for Executive Management.

As a Director of Planning, OSP Design and QA, our CEO has overseen the largest new build out Fiber Optic Operations Project in sixteen (16) islands across the Caribbean Region, including Barbados, the Bahamas and Panama and this has crystalized his preparedness for his role as CEO of FTTXX specializing in Fiber Optic Network Designs.

“He has *“the ability to create structured design templates that optimize speed and consistency in FTTX designs”* and is *“a proven trainer and mentor, empowering the design teams in various regions to complete very difficult designs through innovation”*.”

CTO at Flow, Liberty Global

“He also has the ability to complete intricate designs but additionally *“create efficient, cost effective FTTX/Fiber designs that work in various situations”*.”

Director of Technology at Flow, Liberty Global

Our Team

GIS Consultant

Our GIS Consultant Lead is a certified GIS Consultant, qualified from City and Guild as a Building Technician, from Kingston University in the United Kingdom, as a GIS Professional and is the only Environmental Systems Research Institute Authorized Instructor in St. Lucia.

As a GIS Analyst and the only GIS Analyst at Cable and Wireless (CWC) for many years, has singlehandedly built the GIS geodatabase throughout all LIME business units in the Eastern Caribbean, capturing OSP data using Trimble GPS Units and exporting them to ARCVIEW to build an application for the automated mapping facilities management AM&FM and Provision of Service (POS) modules.

He has also developed, maintained, and standardized Geo-spatial entries and processes for work done by network planners and was instrumental in the installation and configuration of the GPS Reference Stations for LUCELEC St. Lucia, LIME Jamaica, LIME Saint Lucia as well as installed and configured LIME Cayman Island ArcGIS Server and network Engineer Database. Our GIS Consultant was also responsible for building and configuring telco models in ENE specifications and templates in GE Smallworld.

Our primary responsibility relates to analyzing GIS Data for better decision making. He has analyzed, designed, developed, tested and certified many applications, software and systems' functionality, ensured mapping software order fulfillment, managed data development projects and teams and implemented GPS training throughout the Caribbean.

Our Team

Our Telecom Suppliers

In this highly competitive telecommunications industry it is imperative that organizations partner with service suppliers who can provide innovative, cost effective and practical solutions which will capture the imagination of the users and offer the speed and efficiency they are seeking.

FTTXX can guarantee the knowledge, experience, innovation and cost savings to realize an outstanding result. The excellent reputation of our key human resources in the market will attest to FTTXX's ability to exceed the requirements of each project.

Our Clients

➤ Liberty Global

- FTTH Designs
- Using GIS tools to create web applications
- Create and build mobile field surveys for walkouts
- Field Operations and Field Data Capture

➤ SEU

- Fiber Optic splicing
- Fiber Node Optimization
- Fiber Optic Plant Maintenance / Network Outages

➤ VIYA

- Provide professional Service as it relates to the set up and configuration of the agreed ESRI ArcGIS suite, Crescent Link software and field walk-out and data collection using field mobile apps.
- Data migration from AutoCAD to the Enterprise GeoDatabase.
- HFC RF Design Engineers training
- FTTH Design (Indexing)

➤ GT&T

- Audit LCP Cabinets/ports with Sniffer device to record the ONT/FSAN numbers, splitter ports, status of the fiber and manually log the status on the Splice Audit Doc. Manually Tag and disconnect inactive ports.
- Data migration from CrescentLink File Geodatabase to the Enterprise Geodatabase system.
- Rapid training for staff on new system.
- On-site and remote technical support for the installation and configuration of ESRI ArcGIS suite and Crescent Link software.
- Define the OOTB Configuration Requirements for ESRI ArcGIS and CrescentLink.
- Apply a standard CrescentLink configuration to the dataset as set out by Spectrum.
- Apply configuration for favorites, field properties, Auto Updater assignment, model name assignment, stored displays, page templates, and standard symbology that are provided in the Esri/CrescentLink sample database.
- Identify all the Roles required for Esri/CrescentLink based on GT&T workflow

Our Clients

➤ Enware Chicago

- Execute planning and design works
- Plan and design dark fiber optical network for the Enware Plants.
- Design Fiber trunk routes to fiber nodes locations adopting Enware prescribed architecture and standards
- Design fiber optic distribution network to include all supporting documentation, splice matrix and construction drawings
- Produce Bill of Material as per Enware sample BOM
- Design completed on a GIS database or platform approved by Enware e.g. Esri platform
- Data gathering and Desktop-Based addressing verification
- Design optimization for most efficient use of fiber using pole routes and homes passed information
- FTTH Designs
- Construction Outputs including splice sheets
- Update all as-built information after construction is completed.

➤ Cable Bahamas Ltd.

- Network architecture to include demand profiles, connectivity, and construction methods
- HUB/POP sites for GIS data for backbone access
- Approved material and sizing of network assets
- Connectivity requirements to include splicing
- Building and permitting constraints as mandated by local, state, and federal authorities
- Existing conditions such as leased assets and backbone connectivity
- Existing HUB/CO locations
- Incorporate construction topicals as created by project stakeholders
- Approved labor and materials



Contact Us



Website

www.fttxxdesigns.net



Phone

(904)422-3190 or (904)235-0414



E-mail

info@fttxxdesigns.net or support@fttxxdesigns.net



HQ address

Suite 175
4781 N. Congress Ave. STE 75
Boynton Beach, FL 33426